



AWS  
re:Invent

**NET 311 - R**

# Traffic management for multi-region architectures

## **Tino Tran**

Principal Solutions Architect,  
Edge Services  
Amazon Web Services

## **Divya Sreekumar**

Sr. Product Manager  
Amazon Web Services

# Agenda

Why design with multiple regions?

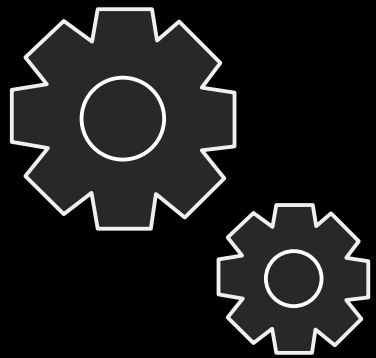
Challenges for managing traffic

Routing patterns on AWS

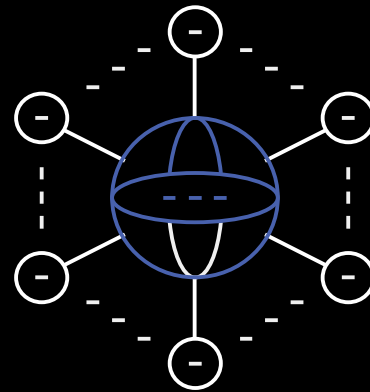
Open discussion

Further considerations for multi-region deployment

# Why design with multiple regions?



Improved  
performance



Improved  
availability

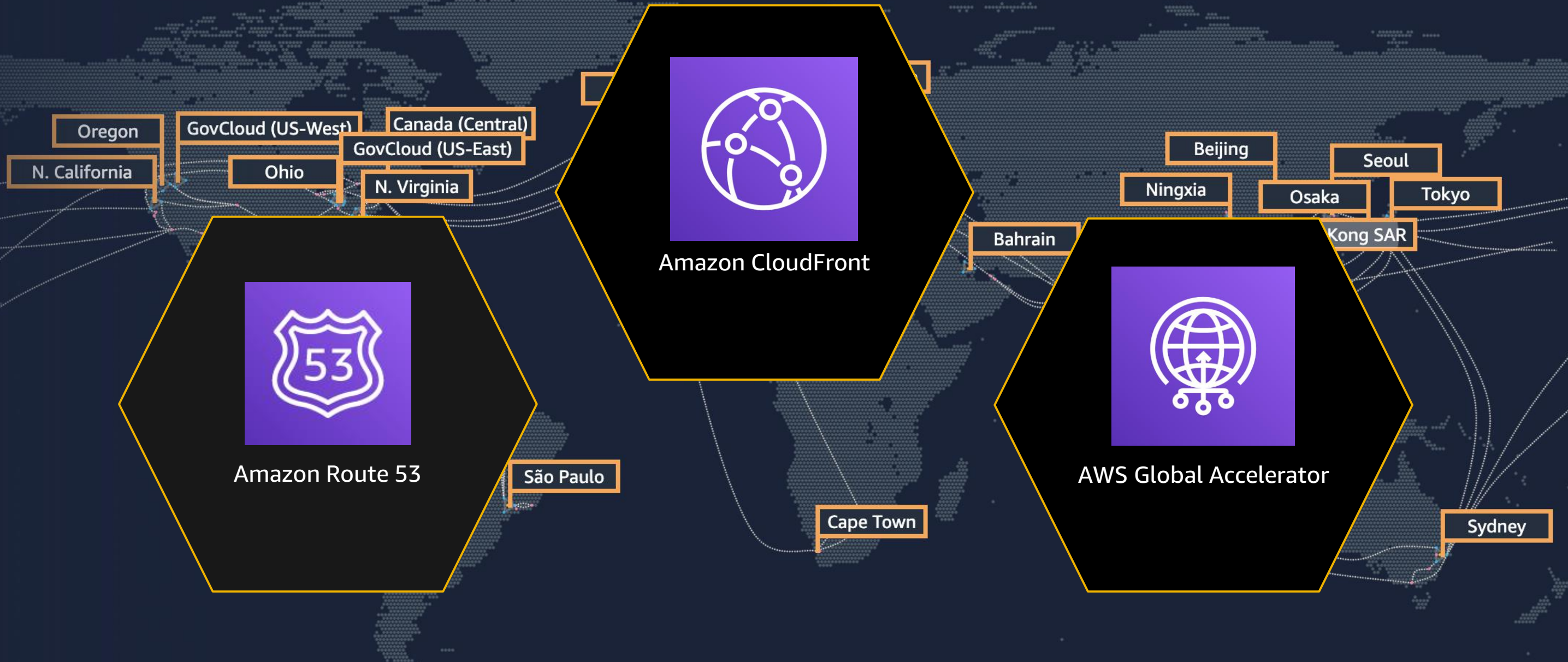


Compliance and  
regulations

# Routing challenges

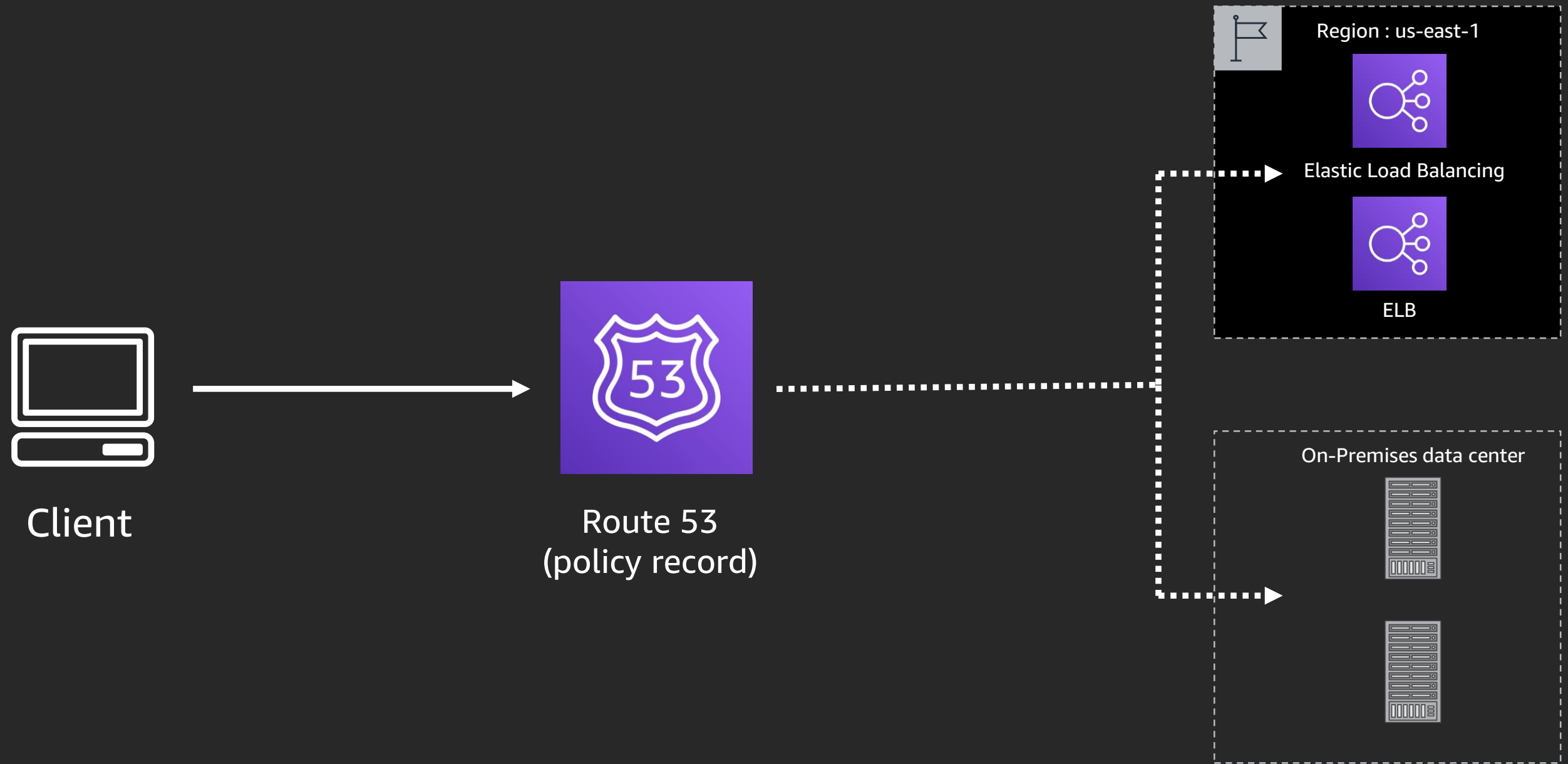
1. Stickiness/session management
2. Routing to AWS managed endpoints
3. Stateful vs stateless failover

# AWS global infrastructure



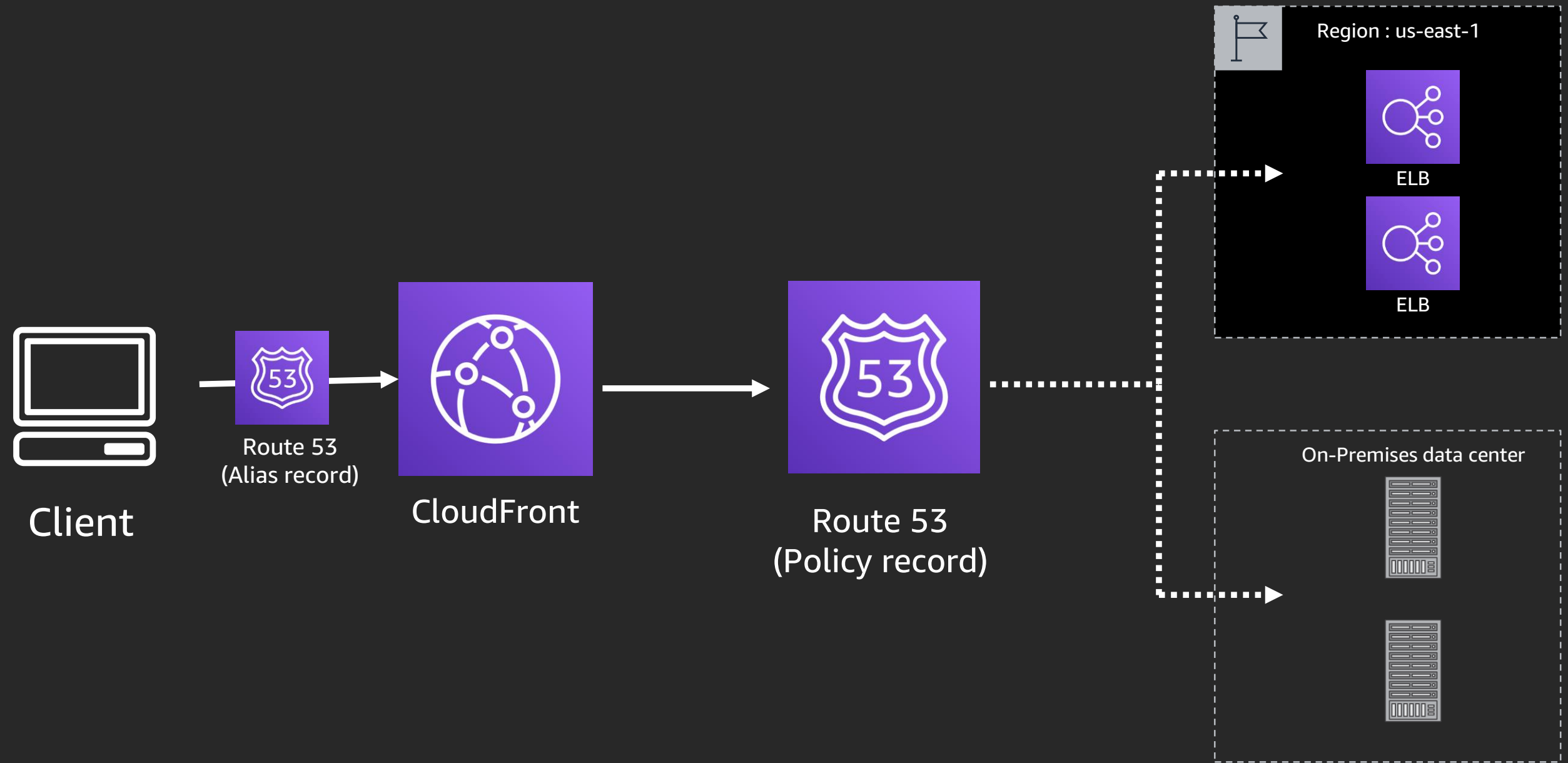
# Routing patterns

# Traditional DNS based routing

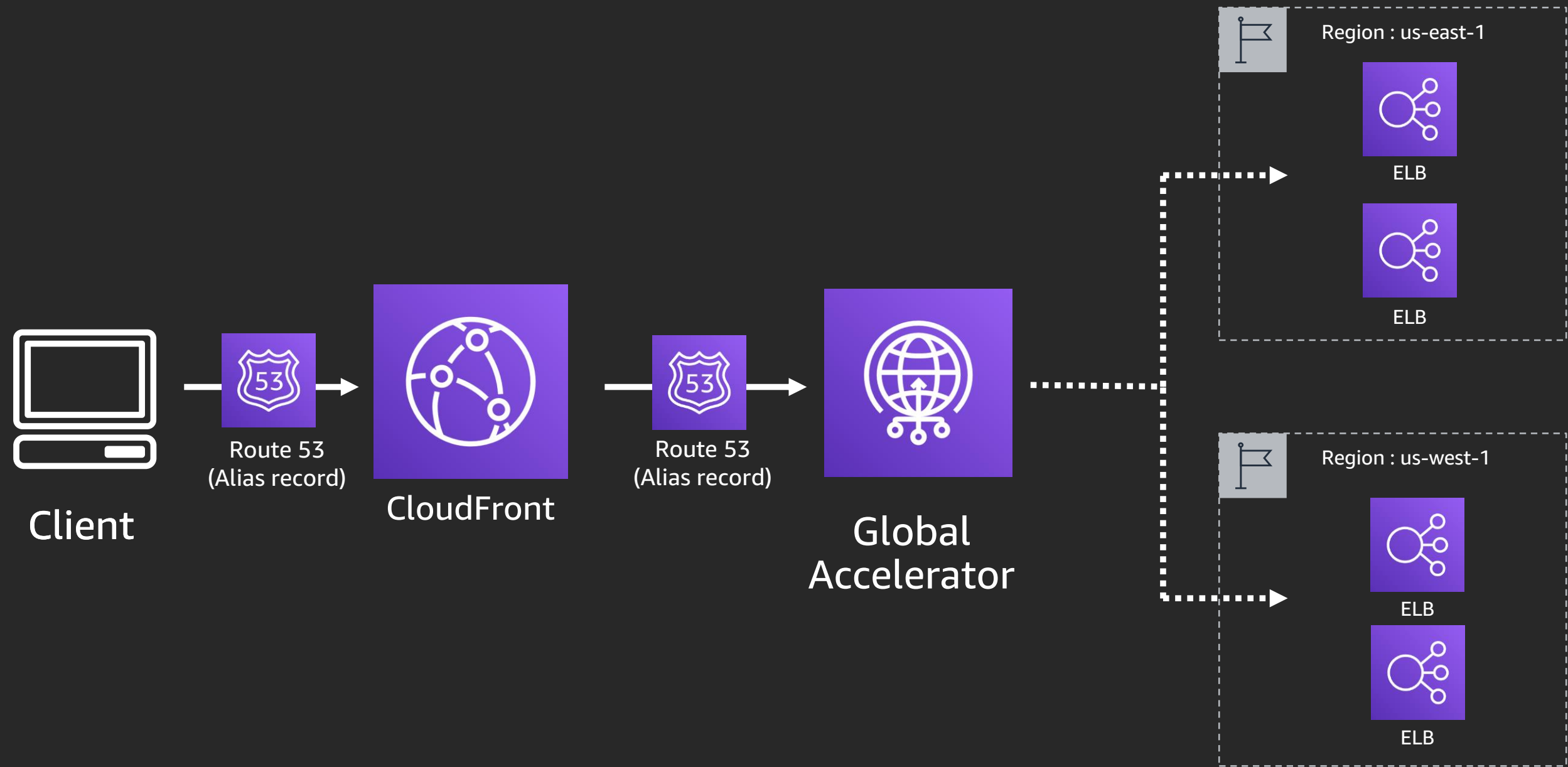




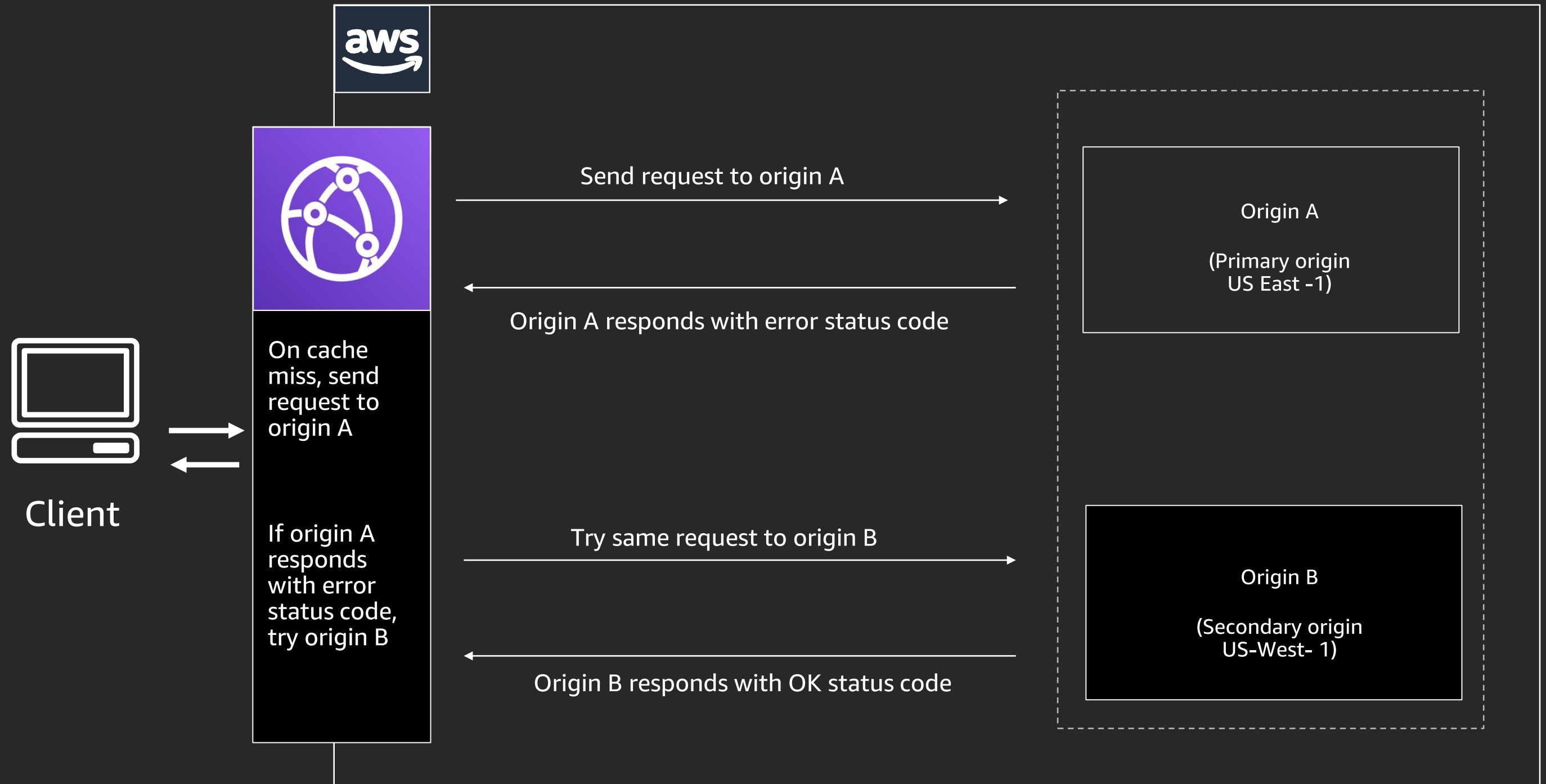
# DNS based routing + CloudFront



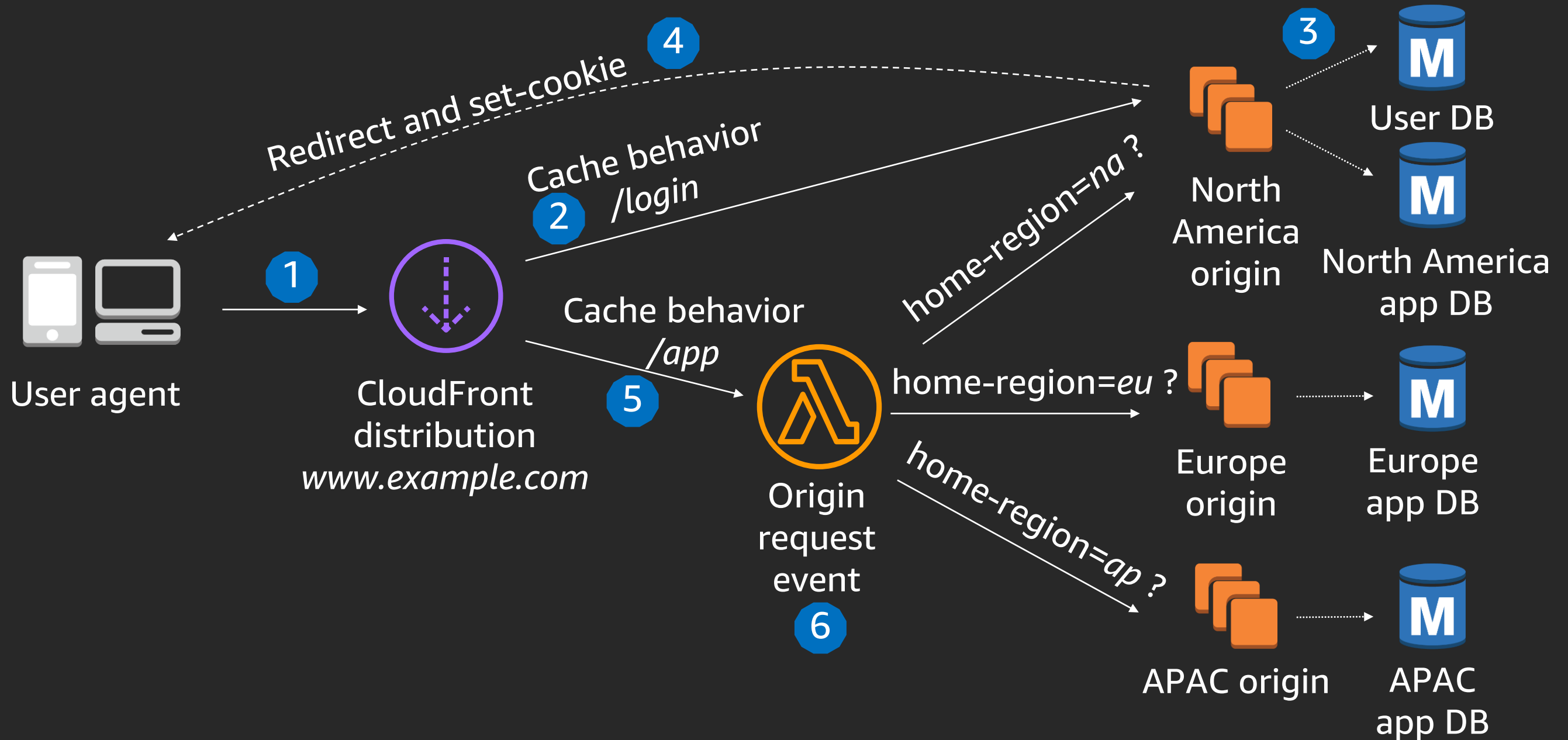
# With Global Accelerator for instant failover



# Origin failover



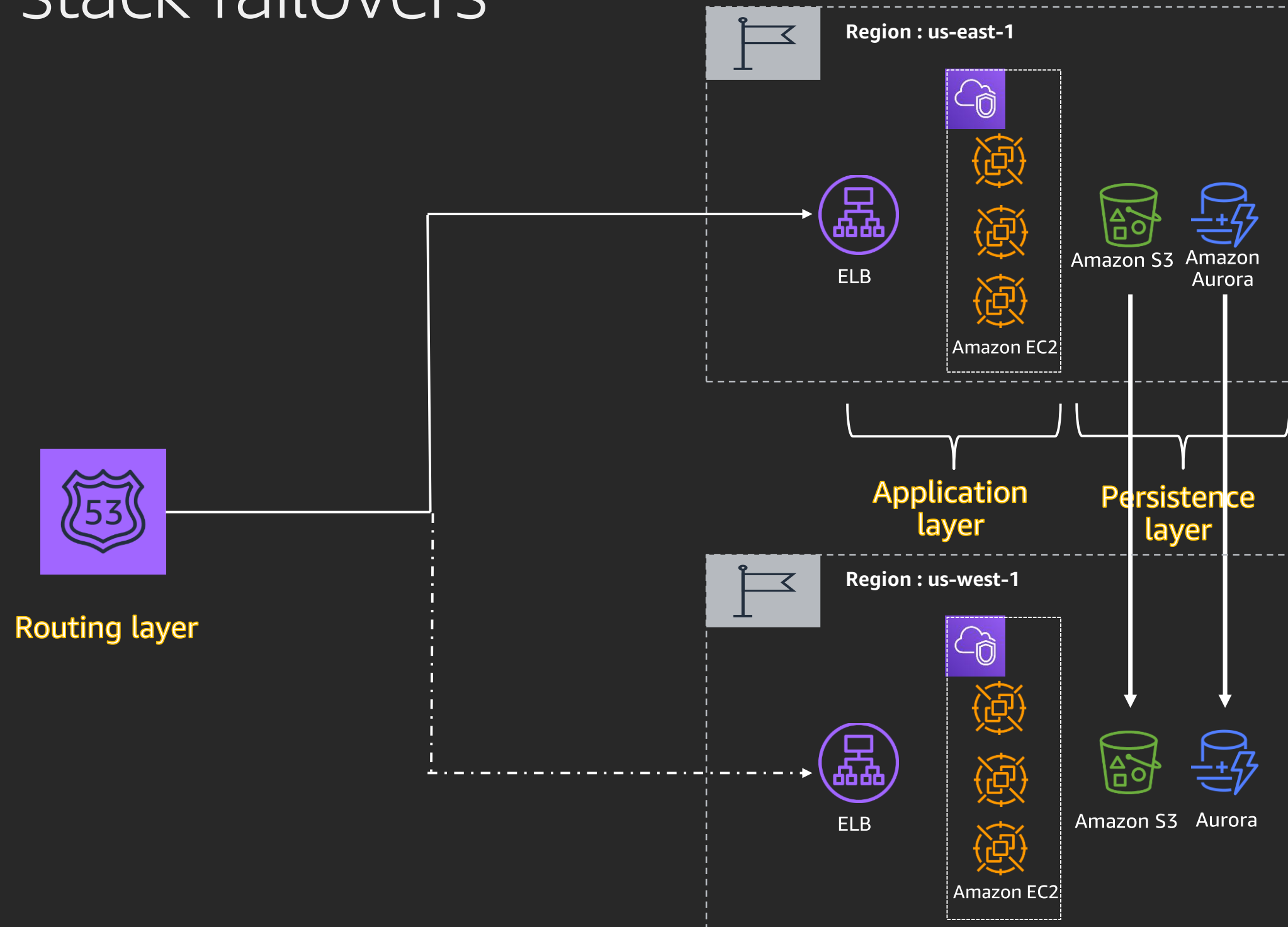
# Cookie-based routing



# Open discussion

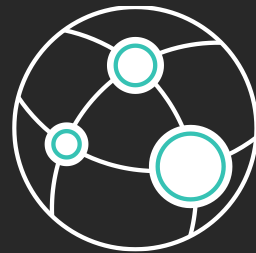
# Other considerations

# Application stack failovers



# Learn networking with AWS Training and Certification

Resources created by the experts at AWS to help you build and validate networking skills



Free digital courses cover topics related to networking and content delivery, including Introduction to Amazon CloudFront and Introduction to Amazon VPC



Validate expertise with the  
**AWS Certified Advanced Networking - Specialty** exam

Visit [aws.amazon.com/training/paths-specialty](https://aws.amazon.com/training/paths-specialty)



# Thank you!

**Tino Tran**

tinot@amazon.com

**Divya Sreekumar**

dssreeku@amazon.com



Please complete the session  
survey in the mobile app.