



AWS
re:Invent

DEM121

Taming the monolith using an event-driven architecture.


Marcos Sader 🙌

Director of Platform Engineering
Olapic

Agenda

 Intro

 Monolith vs Microservices

 Event-Driven Architecture 101

 Amazon SNS (Simple Notification Service)

 Taming the Monolith

 Q&A

Agenda

 Intro

 ~~Monolith vs Microservices~~ 

 Event-Driven Architecture 101

 Amazon SNS (Simple Notification Service)

 Taming the Monolith

 Q&A



MICROSERVICES

MONOLITH

Event-Driven Architecture 101

“Event-driven architecture (EDA) is a software architecture paradigm promoting the production, detection, consumption of, and reaction to events.”

Wikipedia

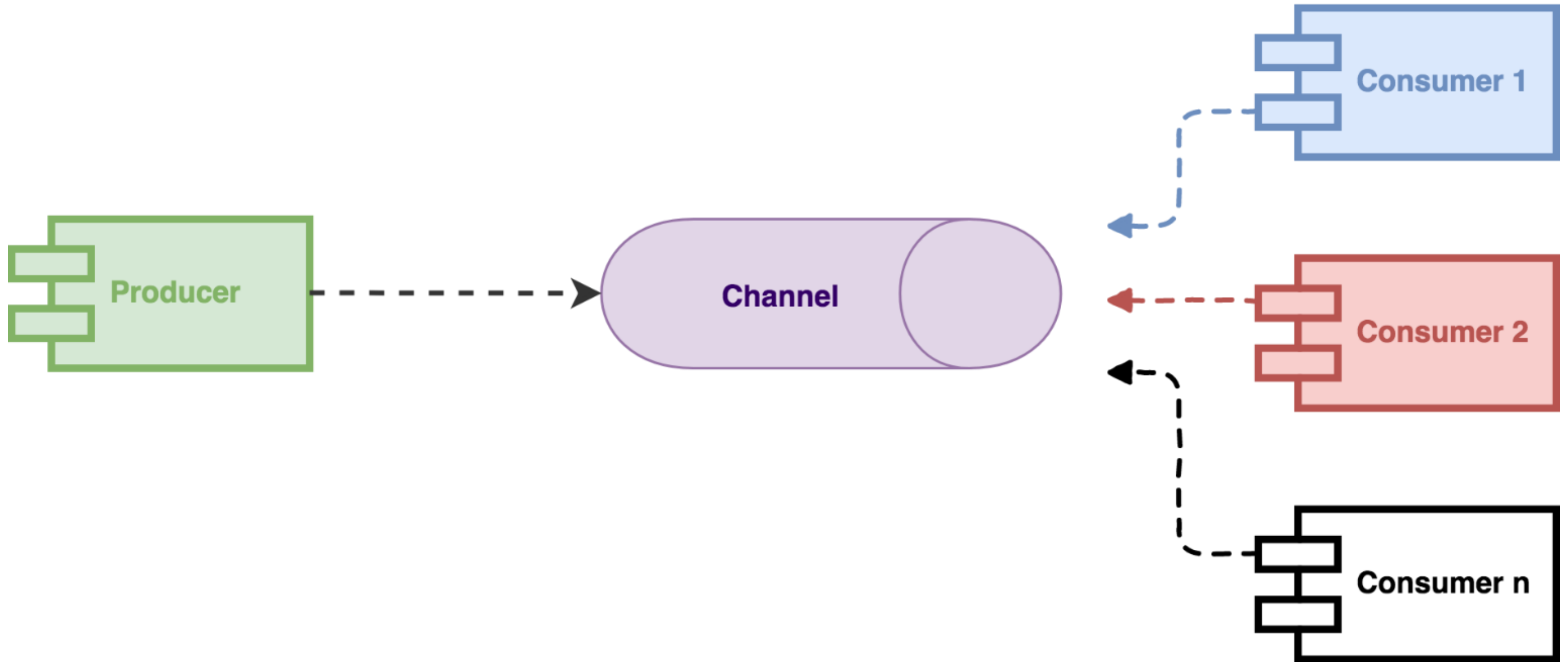
Event-driven architecture

“An event can be defined as
a significant change in state”

Wikipedia

Event-driven architecture

Components of an Event-Driven Architecture



CAUTION

ANALOGIES AHEAD

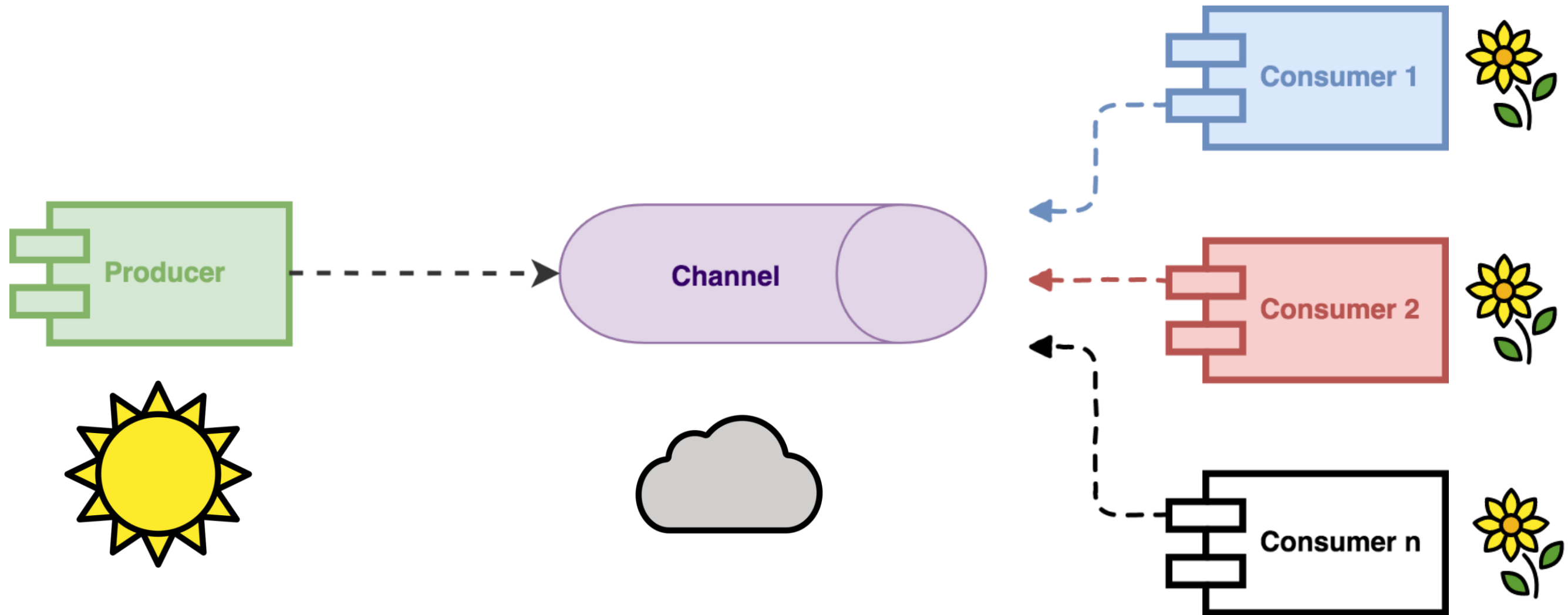
PROTECTIVE HEADGEAR MUST BE WORN IN THIS AREA





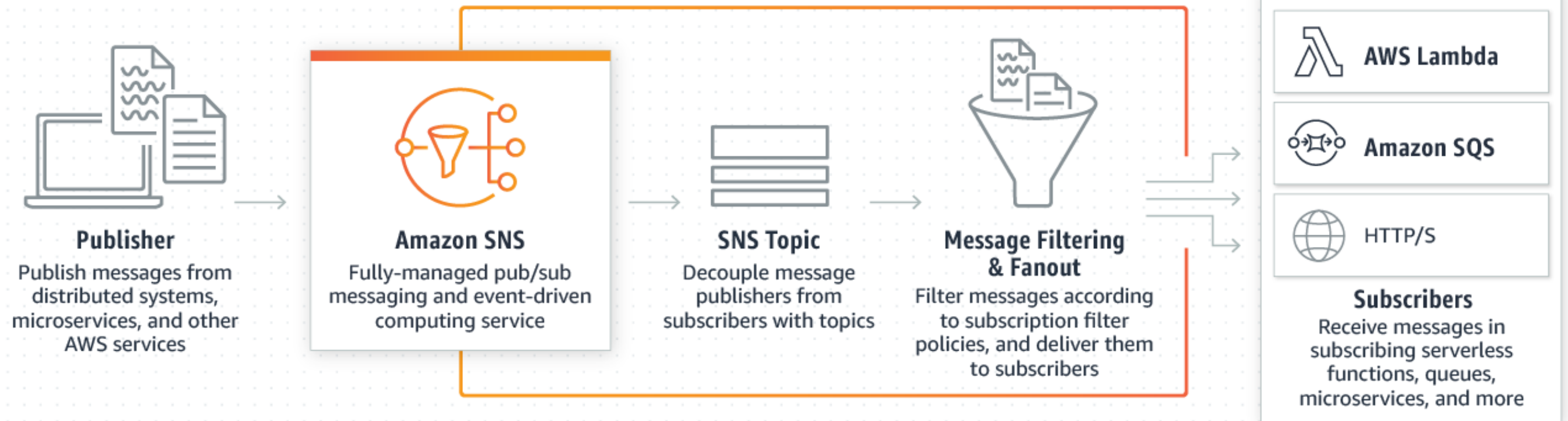


Components of an Event-Driven Architecture



Amazon Simple Notification Service

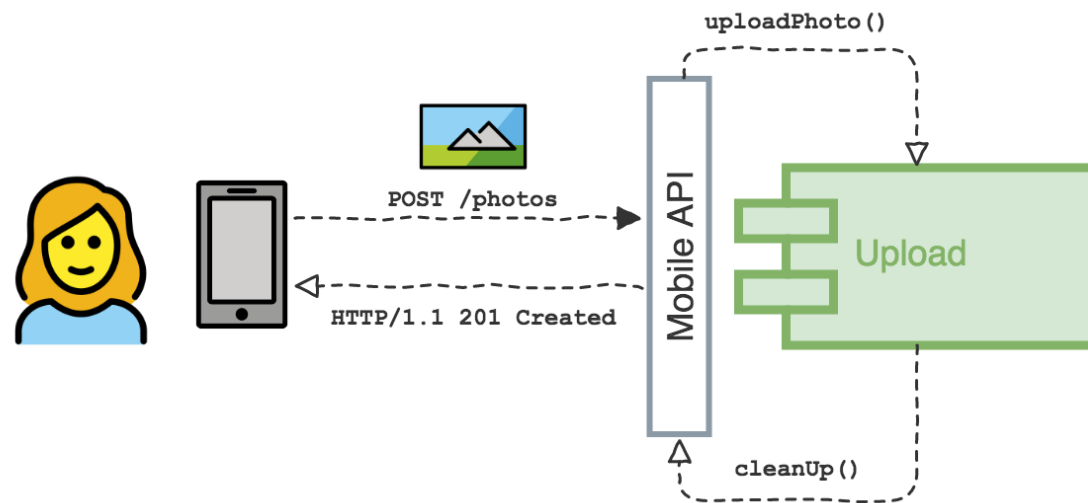
Amazon Simple Notification Service



Taming the Monolith

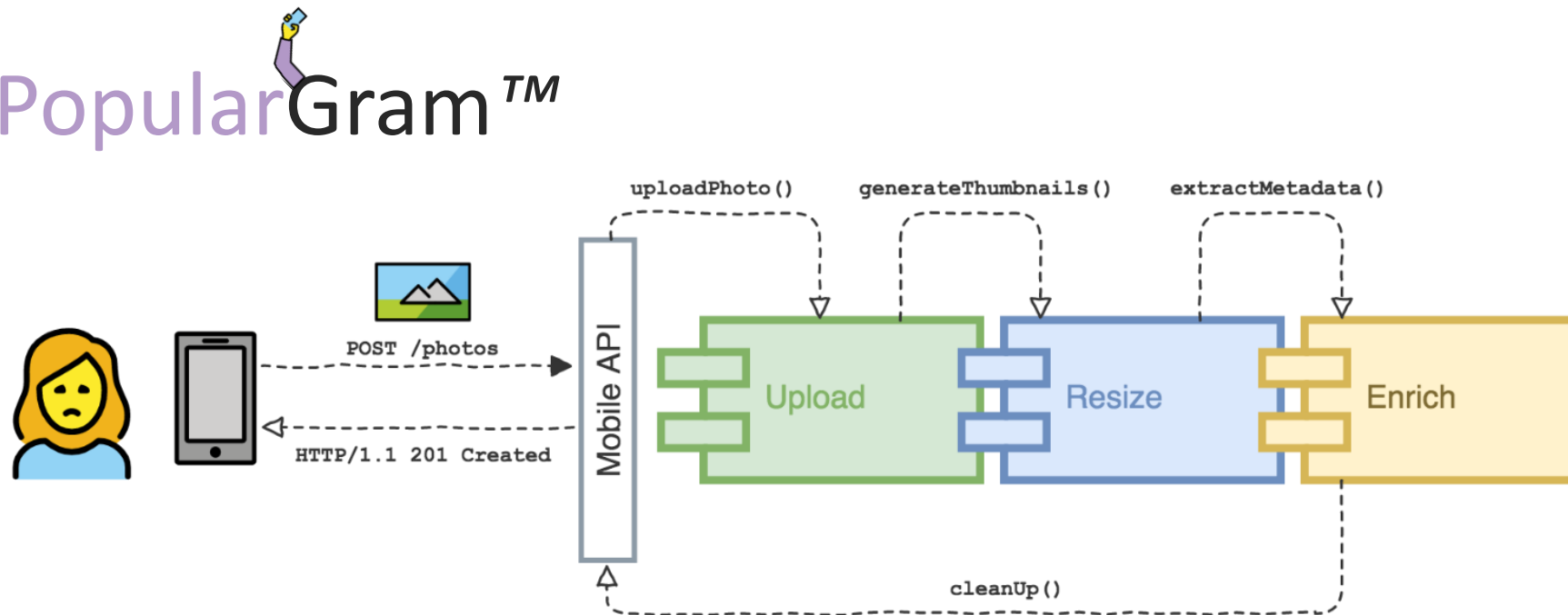
Request/Response Model

BetaGram™



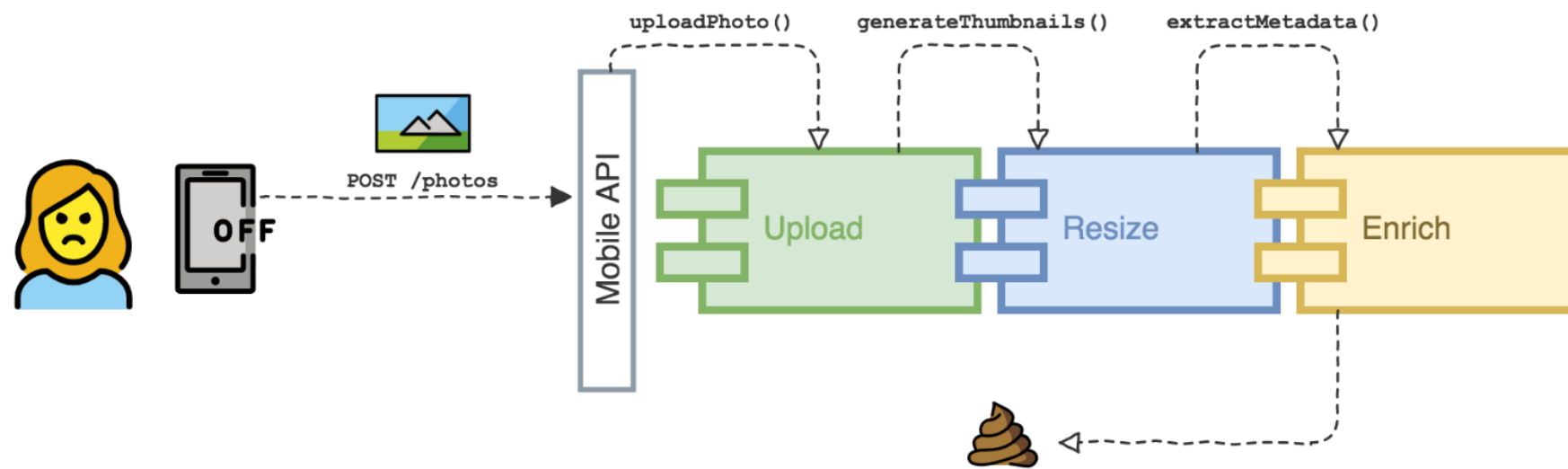
Request/Response Model

PopularGram™



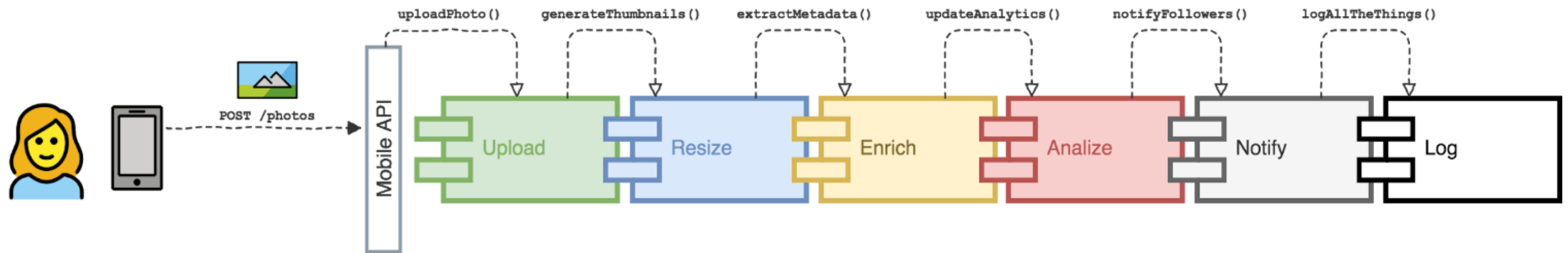
Request/Response Model

FailGramTM



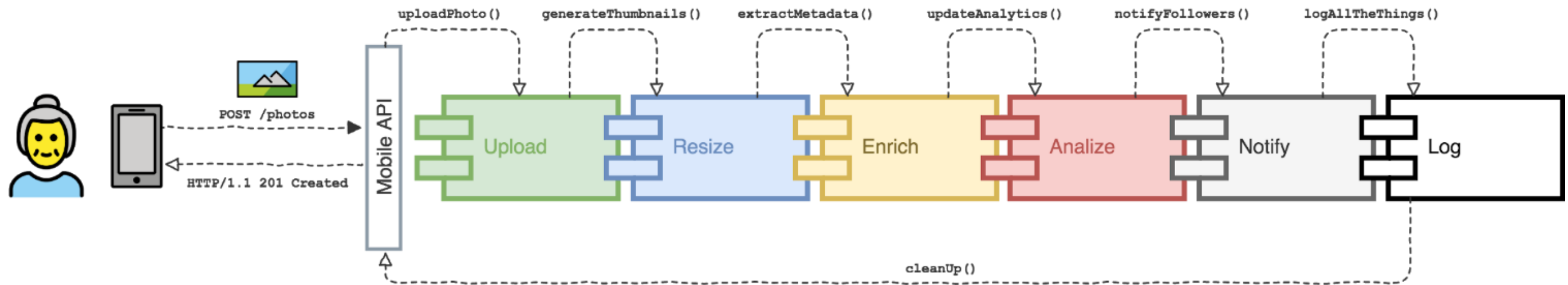
Request/Response Model

FullGramTM

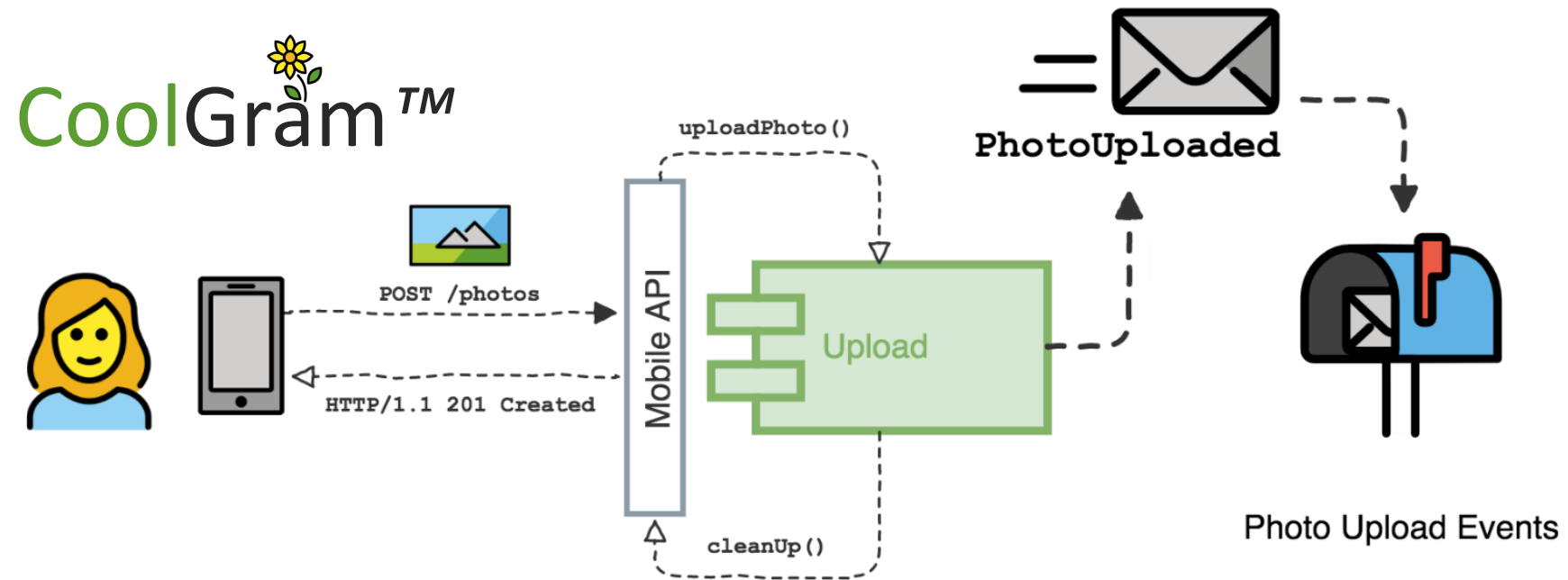


Request/Response Model

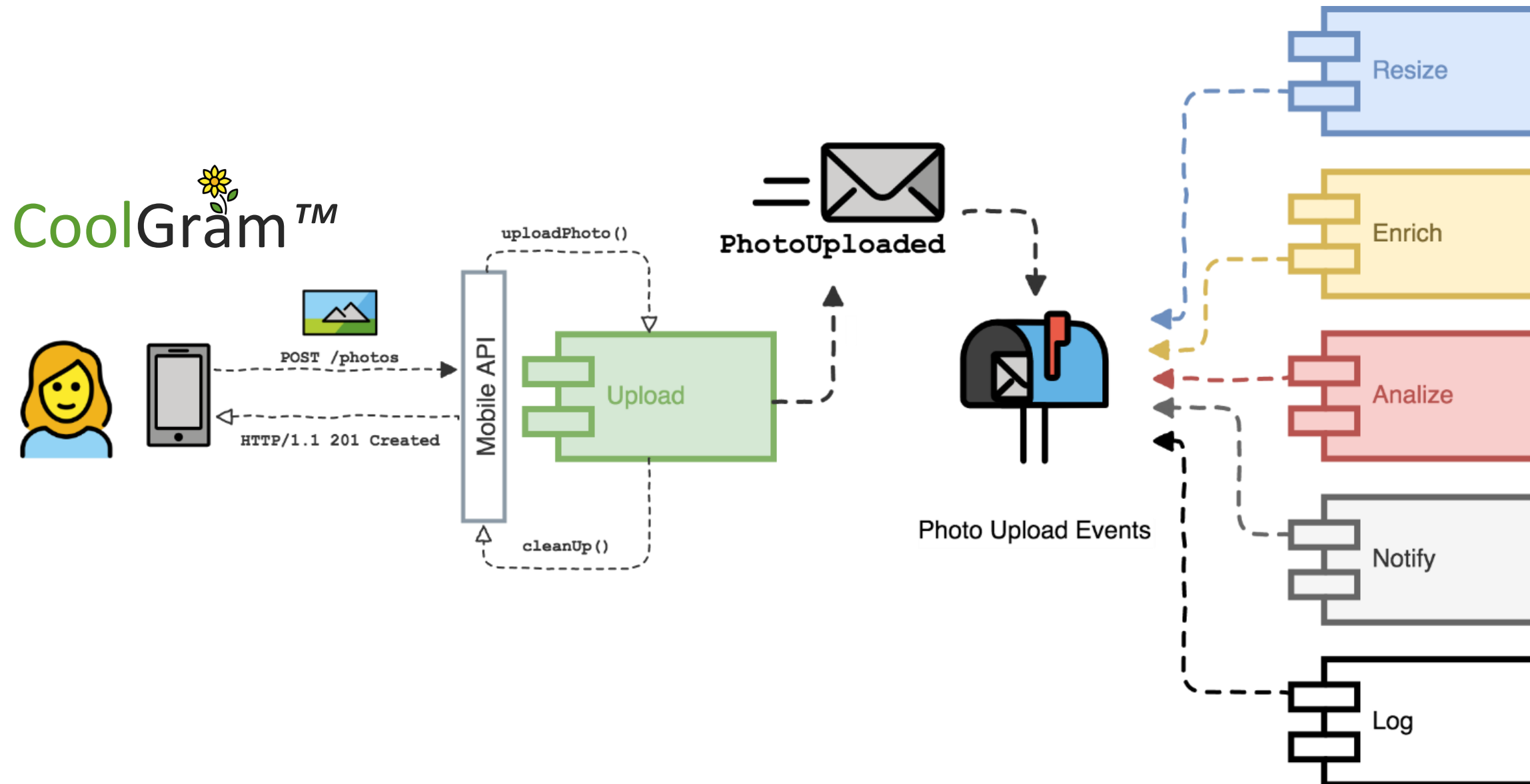
SlowGram™



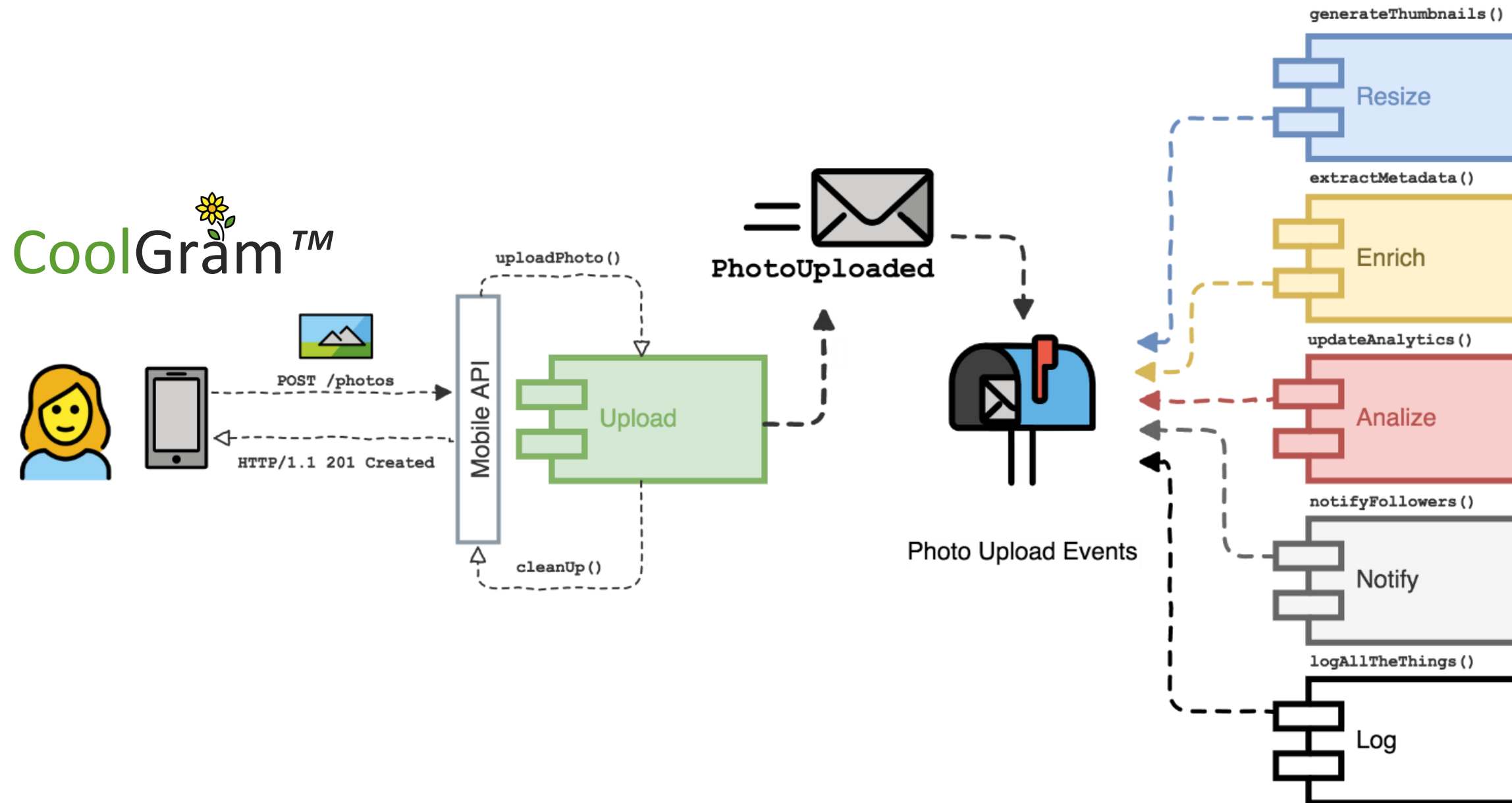
Event-Driven Model



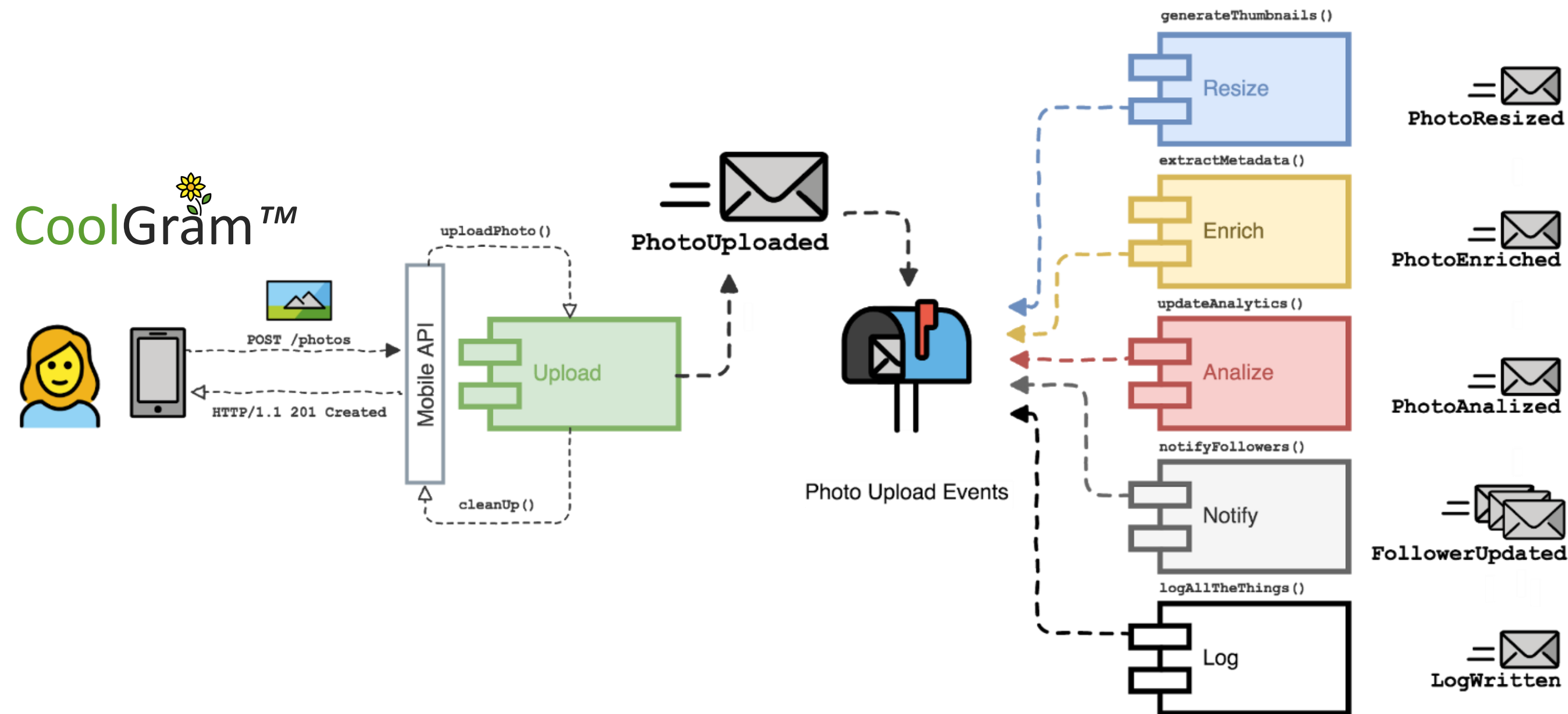
Event-Driven Model



Event-Driven Model



Event-Driven Model



Thank you!

Marcos Sader

@xmarcos

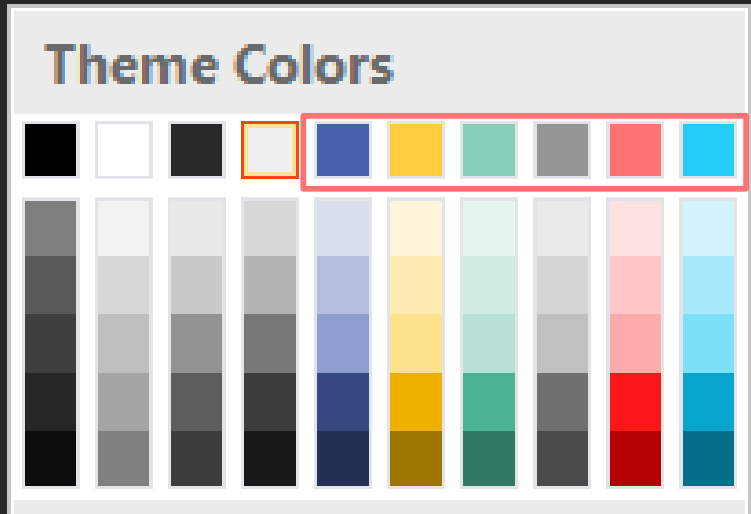


Please complete the session
survey in the mobile app.

Theme colors

The PowerPoint palette for this template has been built for you and is shown below.

Limit color usage to two of the six accent colors shown. Do not use different shades of a color.



Text and slide background colors			
R: 0 G: 0 B: 0	R: 255 G: 255 B: 255	R: 0 G: 43 B: 71	R: 240 G: 240 B: 240

Accent colors					
R: 72 G: 97 B: 173	R: 255 G: 206 B: 63	R: 136 G: 206 B: 184	R: 150 G: 150 B: 150	R: 253 G: 114 B: 114	R: 37 G: 204 B: 247

Table 1

	Placeholder	Placeholder
Placeholder	Placeholder	Placeholder
Placeholder	Placeholder	Placeholder
Placeholder	Placeholder	Placeholder

Table 2

	Placeholder	Placeholder
Placeholder	Placeholder	Placeholder
Placeholder	Placeholder	Placeholder
Placeholder	Placeholder	Placeholder

Table 3

	Placeholder	Placeholder	Placeholder
Placeholder	Placeholder	Placeholder	Placeholder
Placeholder	Placeholder	Placeholder	Placeholder
Placeholder	Placeholder	Placeholder	Placeholder

Charts

This bar chart uses the proper template colors. To edit the chart and add your own data, click in the chart, then, under **Chart Tools**, click the **Design** tab, and then click **Edit Data**.

When you add charts from a different source, ensure that you apply the template colors as shown on slide 3 so that the presentation appears as a cohesive whole.

