



EXECUTIVE BRIEFING CENTER

Welcome Guide New York City



Table of contents

3

Welcome

4

Getting here

5

Where to stay

6

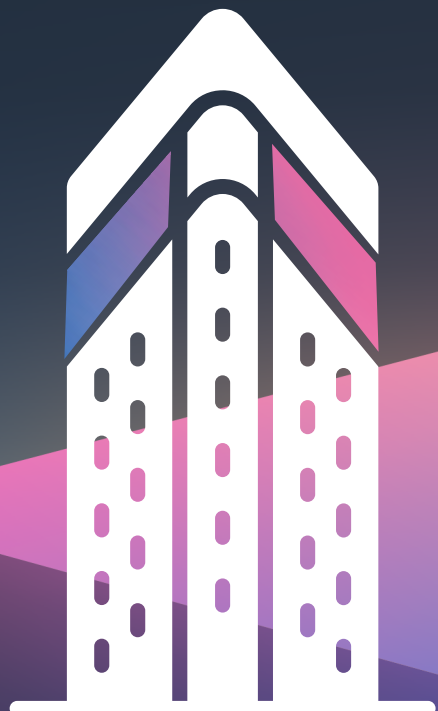
Arrival

7

Eat & drink

9

Area attractions





Welcome, we're glad you're here!

The AWS Executive Briefing Center in Midtown Manhattan is located among some of the city's most prominent skyscrapers and major tourist destinations, inside what was originally New York City's Lord & Taylor building. The building's name, "Hank," which is a unit of measurement for yarn in the garment and textile industry, is a nod to the clothing department store and its rich history of retail innovation. With exceptional architecture that dates back to 1914, the Executive Briefing Center's design weaves historic and unique structural features with modern elements in this state-of-the-art facility.

We look forward to hosting you in New York City!



ADDRESS

12 W. 39th Street
2nd Floor
New York, NY 10018



LEARN MORE

- [About the AWS Executive Briefing Center](#)
- [About AWS](#)
- [About Amazon](#)
- [About The AWS Builder Studio](#)





Getting here

AIR

Commercial

John F. Kennedy

International Airport (JFK)

13.9 mi | 70 min

LaGuardia Airport (LGA)

8.8 mi | 40 min

(Up to 60 min in rush hour)

Newark Liberty International

Airport (EWR)

15.9 mi | 40 min

Private

Teterboro Airport (TEB)

13.1 mi | 50 min

(Up to 60 min in rush hour)

RIDESHARE

At the airport, your rideshare app will direct you to a pickup point where you can meet your driver.



TAXI

Find an iconic yellow cab anywhere in NYC!

Yellow Cabs

EXECUTIVE CAR SERVICES

Please see our recommendations below:

King and Queen Limo

Automotive Luxury Limo

NY City Limo

TRAIN

The New York City Subway System operates with 24-hour service and is one of the oldest and largest public transportation systems in the world. The 5 Av station, located at 5th Avenue and W. 42nd Street, is a five-minute walk to Amazon JFK27.



Where to stay

Refinery Hotel

63 W. 38th St.
New York, NY 10018

+1 (646) 664-0310
0.1 mi | 0.16 km

Park Terrace Hotel

18 W. 40th St.
New York, NY 10018

+1 (212) 781-6400
0.2 mi | 0.32 km

Archer Hotel New York

45 W. 38th St.
New York, NY 10018

+1 (212) 719-4100
436 ft | 0.13 km

Andaz 5th Avenue

485 5th Avenue At, E. 41st St.
New York, NY 10017

+1 (212) 601-1234
0.2 mi | 0.32 km

The Langham, New York, Fifth Avenue

400 5th Ave.
New York, NY 10018

+1 (212) 695-4005
0.1 mi | 0.16 km

Grayson Hotel

30 W. 39th St.
New York, NY 10018

+1 (212) 229-4729
171 ft | 0.05 km

Bryant Park Hotel

40 W. 40th St.
New York, NY 10018

+1 (212) 869-0100
0.2 mi | 0.32 km

Note: Amazon and AWS are not affiliated with the hotels listed and cannot be held responsible for the experience provided. Suggestions are based on close proximity to the AWS office. All distances are mapped from Amazon JFK27.

Arrival

PARKING

No Amazon-sponsored parking is available. There are numerous parking garages near Amazon JFK27 including, but not limited to, [Champion Parking 39 LLC](#).

CHECK-IN

To check in, show a valid, government-issued photo ID at the first-floor reception desk. Reception will store any luggage or coats you would like to check, or you may check your belongings in the EBC. You will receive a guest badge and are required to wear the badge on your outermost layer of clothing while in the building.

Your AWS account manager will meet you in the lobby to escort you to your meeting room.

Amazon JFK27

12 W. 39th Street
New York, NY 10018
7:00 AM – 7:00 PM

ACCOMMODATIONS

Dietary Preferences

Please notify your AWS Account Manager of any specialty dietary preferences at least two weeks in advance of the engagement.

Interpretation Services

To request interpretation services, please communicate the need to your AWS Account Manager six weeks or more prior to the engagement.

Phone Booths

Should you need to step out of your engagement to take a private call, a private phone room is available in the common area outside of your meeting room.

Mother's Suite

A secure, private Mother's Suite is available on the sub-concourse level. Please ask a member of the AWS account team to escort you to the suite.

Interfaith Room

Private rooms for prayer or meditation are available on the sub-concourse level. Please see a member of the AWS account team if you would like to use the space.





Eat & drink

DINING FAVORITES

Keens Steakhouse [Reserve a table](#)

Steakhouse | 0.3 mi, 0.48 km
+1 (212) 947-3636
72 W. 36th St., New York, NY 10018

Bryant Park Grill [Reserve a table](#)

American | 0.3 mi, 0.48 km
+1 (212) 840-6500
25 W. 40th St., New York, NY 10018

Zuma New York [Reserve a table](#)

Japanese | 0.2 mi, 0.32 km
+1 (212) 544-9862
261 Madison Ave., New York, NY 10016

Valbella At The Park [Reserve a table](#)

Modern Italian | 0.4 mi, 0.64 km
+1 (212) 888-8959
3 Bryant Pk., New York, NY 10036

Gabriel Kreuther [Reserve a table](#)

Modern French | 0.3 mi, 0.48 km
+1 (212) 257-5826
41 W. 42nd St., New York, NY 10036

La Pecora Bianca [Reserve a table](#)

Italian | 0.2 mi, 0.32 km
+1 (212) 924-4040
20 W. 40th St., New York, NY 10018

Ramerino Italian Prime [Reserve a table](#)

Italian | 0.2 mi, 0.32 km
+1 (917) 639-3866
16 E. 39th St., New York, NY 10016

Avra Rockefeller Center [Reserve a table](#)

Greek | 0.7 mi, 1.13 km
+1 (212) 430-8888
1271 6th Ave., New York, NY 10020

L'Adresse American Bistro [Reserve a table](#)

New American | 0.3 mi, 0.48 km
+1 (212) 221-2510
1065 6th Ave., New York, NY 10018

Note: All distances are mapped from JFK27. New York City restaurants book up fast and are worth the wait. Check online or call ahead to confirm hours of operation, and book your reservation today!



Eat & drink

EVENING DESTINATIONS

The Ragtrader & Bo Peep [Reserve a table](#)

Industrial venue featuring craft cocktails and a piano bar

0.3 mi, 0.48 km

+1 (917) 261-5495

70 W. 36th St., New York, NY 10018

Patent Pending [Reserve a table](#)

Discreet speakeasy in Patent Coffee with electric-themed cocktails

0.7 mi, 1.13 km

+1 (212) 689-4002

49 W. 27th St., New York, NY 10001

ONE Dine [Reserve a table](#)

Upscale eatery atop One World Trade Center with sweeping city views

3.3 mi, 5.31 km

+1 (212) 602-4075

117 West St., New York, NY 10007

Raines Law Room [Reserve a table](#)

Craft cocktail lounge with a chic retro library vibe

0.2 mi, 0.32 km

+1 (646) 837-6776

24 E. 39th St., New York, NY 10016

Refinery Rooftop [Reserve a table](#)

Chic rooftop oasis atop the former millinery hub of the Garment District

0.2 mi, 0.32 km

+1 (646) 663-5951

63 W. 38th St., New York, NY 10018

Skylark [Reserve a table](#)

Swanky cocktail lounge serving artisanal libations

0.3 mi, 0.48 km

+1 (212) 257-4577

200 W. 39th St., New York, NY 10018

Top of the Strand [Reserve a table](#)

Intimate rooftop retreat with unobstructed skyline views

0.3 mi, 0.48 km

+1 (646) 368-7032

33 W. 37th St., New York, NY 10018

Parker and Quinn [Reserve a table](#)

Creative cocktails set against a vintage backdrop

0.1 mi, 0.16 km

+1 (212) 729-0277

64 W. 39th St., New York, NY 10018

Note: All distances are mapped from JFK27. New York City restaurants book up fast and are worth the wait. Check online or call ahead to confirm hours of operation, and book your reservation today!



Area attractions

If you are arriving early or staying longer in New York City, here is a list of recommendations that we think you might find enjoyable!

● *Amazon attraction*



● **JFK27 Builder Studio**

Serving as both a showroom and collaborative workshop space, this high-tech, immersive studio empowers fresh thinking with Amazon technology demos and the opportunity to develop prototypes of innovative solutions with AWS specialists.

NYC FAVORITES

Chelsea Market | 1.8 mi, 2.9 km

This culinary destination is considered one of the greatest indoor food and retail marketplaces. The lively food hall has a collection of distinctive merchants and is known for its wide range of eateries and delicious fare.

Top of the Rock | 0.8 mi, 1.29 km

Located on top of Rockefeller Center, a historic New York City landmark, this observatory offers spectacular, unobstructed views of iconic landmarks and the city skyline.

Edge | 1.2 mi, 1.93 km

This 100-story-high observation deck is the highest outdoor sky deck in NYC. Suspended in mid-air with a glass floor, the deck is designed to make visitors feel like they are floating in the sky while experiencing 360-degree views of the city.

● **Amazon Go** | 0.3 mi, 0.48 km

Amazon Go is a new kind of store with no checkout required. We created the world's most advanced shopping technology so you never have to wait in line. With our Just Walk Out shopping experience, simply use the Amazon Go app to enter the store, take the products you want, and go!



Area attractions

If you are arriving early or staying longer in New York City, here is a list of recommendations that we think you might find enjoyable!



ARTS & CULTURE

St. Patrick's Cathedral | 0.7 mi, 1.13 km

Known for being one of the largest cathedrals in the country, St. Patrick's takes up an entire city block of Midtown Manhattan. Its neo-Gothic architecture, including thousands of stained glass windows, make it a visually stunning sight to see.

Broadway Theater District | 0.7 mi, 1.13 km

In the bustling, brightly lit tourist destination known as Times Square, 39 professional theaters offer popular shows, musicals, and plays.

The Metropolitan Museum of Art | 2.2 mi, 3.54 km

This distinguished institution boasts over two million pieces of artwork, collectibles, and antiquities that span 5,000 years.

Radio City Music Hall | 0.8 mi, 1.29 km

Home of the legendary Rockettes, this entertainment venue and theater located within Rockefeller Center also hosts concerts and live events.



Area attractions

If you are arriving early or staying longer in New York City, here is a list of recommendations that we think you might find enjoyable!

SPORTING EVENTS & ENTERTAINMENT

Madison Square Garden | 0.6 mi, 0.97 km

Also referred to as The Garden or by its initials MSG, this major sporting facility and music arena is home to the NHL's New York Rangers and NBA's New York Knicks.

Yankee Stadium | 8.5 mi, 13.68 km

This baseball park is one of the most expensive stadiums ever built. It is located in the Bronx, one of five boroughs in New York City, and is home to the MLB's New York Yankees.

OUTDOORS IN THE BIG APPLE

Central Park | 1.1 mi, 1.77 km

Covering 843 acres, this park is located in between the Upper East and Upper West Sides of Manhattan. With landscapes, amusement attractions, and recreational activities, it is the most visited urban park in the United States.

The High Line | 1.3 mi, 2.09 km

Stretching 1.45 miles along the west side of Manhattan, the High Line is an innovative green space built on a former New York Central Railroad spur. With original tracks still visible along the path, the elevated, linear park weaves between buildings, offering vistas of the city and the Hudson River.





AWS Executive Briefing Center

12 W. 39th Street
New York, NY 10018